



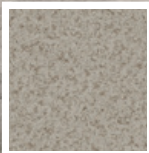
DECKSHIELD™

Premium Vinyl Decking Membrane

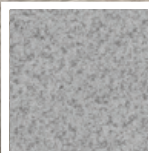
- ✔ Enhances the Appearance of Decks
- ✔ Eliminates Painting and Staining
- ✔ Slip Resistant
- ✔ Textured Surface
- ✔ Complies with ADA requirements



Pebblestone



Cobblestone



Cedar Grove



Silver Maple

THE MATERIAL

IB DeckShield™ is a dual-ply, waterproofing system, skid-resistant, embossed and printed vinyl sheet that is laminated to a non-woven polyester fleece backing. The PVC is a calendared film construction and meets the physical performance values of ASTM D4434, Type II.

- ✔ Enhances the Appearance of Decks
- ✔ Eliminates Painting and Staining
- ✔ Slip Resistant
- ✔ Textured Surface
- ✔ Complies with ADA requirements

DESIGN

DeckShield™ is specifically designed for residential and commercial exterior walkways, patios, decks, balconies, stairways, around swimming pools, hot tubs, and locker rooms. DeckShield™ is designed as a walkable vinyl deck. DeckShield™ will also fully adhere to prepared plywood and concrete surfaces.

MAINTENANCE

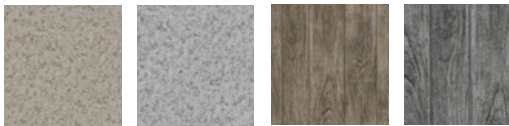
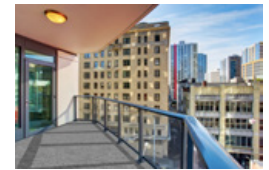
DeckShield™ cleans easily with soap and water. When cleaned properly, DeckShield™ membrane will continue to perform and look great for many years.

WARRANTY

DeckShield™ offers up to a 10-year limited warranty against manufacturer's defects. Please refer to the DeckShield™ sample warranty for more details.



Doorways and railings are welcomed by the DeckShield™ system. The system also has many prefabricated flashings to make your deck look more professional.



COLORS

DeckShield™ designer colors are available in 4 stunning colors and textures:



INSTALLATION

IB DeckShield™ is hot-air welded using the Automatic Hot Air Welding Machine or Hot Air Hand Welder to create a clean, durable seam.

LIMITATIONS

The product is limited for use in areas that are subject to traffic loads generated by residential occupancies only (light pedestrian traffic). Any physical or chemical damage to the membrane must be repaired in accordance with the manufacturer's instructions. The product must not be installed with butt seam joints. Joints must be shingle-lapped in order to shed water.

Discover the Difference, visit IBroof.com | 800.426.1626

IB ROOF SYSTEMS | 506 East Dallas Rd. | Ste. 300, Grapevine, TX 76051

